

Jabra®

Intradex
headsets.at

JABRA HEADSET SOLUTIONS FOR SOFTPHONES

DISCOVER FREEDOM WITH JABRA



Discover freedom with a Jabra headset optimized for your PC-based softphone!

Jabra offers an extensive range of corded and wireless headset solutions that enable Remote Call Control (RCC) with leading brands of softphones and Unified Communications systems. RCC allows you to control many of your softphone's features away from your desk – even if your PC screen saver is activated.

As mobility within the working environment continues to increase, it is vital that employees have business tools that enable them to work efficiently regardless of location. A Jabra headset with RCC capabilities enables you to roam and still do business on the spot!

WHY JABRA HEADSETS?

Once you discover the benefits of hands-free telephony, you never want to go back to traditional phone sets. Jabra headsets are more ergonomic and convenient to use, enhancing flexibility and the ability to multitask with maximum efficiency.

FREEDOM FOR ALL

Jabra headsets allow you to search for documents, make copies or enter data on your PC while talking to a customer. With a wireless headset you can enjoy freedom of movement up to 150 meters away from your desk. As a result you can provide better service and use time more effectively by reducing the call-back rate.

Conference calls are a growing part of communication with colleagues and partners. All Jabra wireless headsets have built-in mute functionality that allows you to stretch your legs and walk around during a long call without background noise interfering with the call.

LEVELS OF CALL CONTROL

With RCC you get a ringtone in your ear when you have an incoming call, and with a Jabra wireless headset you can answer the call on the spot. No more running back to your desk to pick up important calls out of breath. Moreover you can adjust the volume or even mute the call, if you need to. When you are done, simply end the call from the headset.

Many of the softphone-headset combinations mentioned in this guide offer the following basic Remote Call Control features: "Ring tone", "Answer call", "End call". Most Jabra headsets already provide "Adjust volume". Features such as microphone "Mute" and "Redial" may be available on certain Jabra headsets. These features are highlighted if applicable.

COMPATIBILITY

You can use your Jabra headset with any softphone even if it does not support RCC capabilities. Simply set up your Jabra headset as an audio device on your PC (see instructions on page 31 of this guide) so you can benefit from:

- ✓ **Multitask with maximum efficiency;**
Have both hands free to use your PC while on a call
- ✓ **Comfort and ergonomics**
Headsets prevent aching muscles and neck strain.
- ✓ **Safe and secure**
PeakStop™ technology protects users hearing from sudden loud noises.
Tested for safety of radiated emissions.
Encrypted voice calls in wireless headsets.
- ✓ **Sound economics**
Headsets provide a cost effective alternative to the traditional desk phone when you are using a softphone to transfer, conference, forward or redial your calls. Do your own calculation on how soon your headset will have earned itself with the Jabra ROI calculator: www.jabra.com/roi

3 WAYS TO ENABLE REMOTE CALL CONTROL

When connecting your headset to your softphone, there are three different ways of enabling RCC:

1. Plug-and-play
2. Through a separate driver
3. Through Jabra PC Suite

The list of softphones on the following pages will explain which method applies to your system.

1. PLUG-AND-PLAY

Some Jabra headsets have integrated drivers for specific softphones from leading manufacturers as shown on page 7-28. No additional software is required for Remote Call Control.

2. SEPARATE DRIVER

In some cases softphone manufacturers, offer their own drivers that enable RCC with Jabra headsets. Just download the driver from the manufacturers website and install it on your PC. See the links on the following pages.

3. JABRA PC SUITE

With some softphones you need to install Jabra PC Suite – a free PC software that includes drivers for leading softphones such as Avaya One-X , Cisco IP Communicator, IBM Lotus Sametime and Skype (see www.jabra.com/pcsuite for an updated list of softphones). Apart from RCC drivers, Jabra PC Suite enables users to update headset firmware and control the way their headset will work together with PC softphones and other audio programs.



Jabra PC Suite can be downloaded at www.jabra.com/pcsuite

TABLE OF CONTENT

AASTRA	7
ALCATEL-LUCENT	8
AVAYA	9
CISCO	10
COUNTERPATH	11
DEUTSCHE TELEKOM	12
GLOBAL IP TELECOMMUNICATIONS	13
IBM	14
IFM INFOMASTER	15
INNOVAPHONE	16
IS COORD	17
MICROSOFT	19
PHONER	20
SAP	21
SIEMENS	22
SKYPE	23
SNOM	24
SWYX	25
TOSHIBA	26
ZYLINC	27
3CX	28
SUPPORTED SOFTPHONES	29
ORDER INFORMATION	32
CONTACT INFORMATION	33



JABRA WIRELESS SOLUTIONS FOR SOFTPHONES



HEADSET	JABRA PRO™ 9470 JABRA PRO™ 9465 DUO	JABRA PRO™ 9460 JABRA PRO™ 9460 DUO JABRA PRO™ 9450	JABRA GO™ 6470 JABRA GO™ 6430	JABRA PRO™ 930	JABRA GN9350e / GN9330e USB	JABRA GO™ 660
	STAY IN TOUCH AROUND THE OFFICE	STAY IN TOUCH AROUND THE OFFICE	STAY IN TOUCH WHEREVER YOU GO	WIRELESS COMMUNICATION STARTS HERE	SUPERIOR SOUND AND CONNECTIVITY	OUTSTANDING DESIGN AND SUPERB SOUND
CONNECTIVITY						
BLUETOOTH® CAPABLE	Yes	No	Yes	No	No	Yes
RANGE ¹	Up to 150m	Up to 150m	Up to 25m for mobile phones Up to 100m for desk and soft-phones	Up to 120m	Up to 120m	Up to 10m
TALK TIME ¹	Up to 10 hrs	Up to 10 hrs	Up to 6 hrs	Up to 8 hrs	Up to 6 hrs (Around the clock talk time with additional battery)	Up to 5.5 hrs
WEARING STYLE	Earhook ² , Headband, Neckband ²	Earhook ² , Headband, Neckband ³	Earhook, Headband, Neckband ³	Headband, Earhook ² , Neckband ²	Earhook, Headband, Neckband	Earhook and Ultimate-fit Eargel™
MICROPHONE – NOISE-CANCELING OR NOISE BLACKOUT™	Jabra PRO 9470 2 microphone Noise Blackout™ Jabra PRO 9465 Duo Noise-canceling microphone	Noise-canceling microphone	2 microphone Noise Blackout™	Noise-canceling microphone	Noise-canceling microphone	2 microphone Noise Blackout™ Extreme
ENHANCED AUDIO QUALITY	Yes, via Duo Core DSP ⁴ technology	Yes, via Duo Core DSP ⁴ technology	Yes, via DSP ⁵ technology	Yes, via DSP ⁴ technology	Yes, via DSP ⁴ technology for Jabra GN9350e	Yes, via DSP ³ technology
DUO VERSION	Yes	Yes	No	No	No	No
KEY BENEFITS	<ul style="list-style-type: none"> - Touch screen & touch sensors for easy setup and intuitive call control⁵ - 3 X Multiuse connectivity: switch seamlessly between desk, soft and mobile phone - Superior audio experience with wideband sound, DSP⁴ and 2 microphone Noise Blackout™ or noise-canceling microphone 	<ul style="list-style-type: none"> - Touch screen & touch sensors for easy setup and intuitive call control⁵ - 2 X Multiuse connectivity: switch seamlessly between desk and softphone - Superior audio experience with wideband sound, DSP⁴ - Noise-canceling microphone 	<ul style="list-style-type: none"> - Touch screen & touch sensors for easy setup and intuitive call control - 3 X Multiuse connectivity: switch seamlessly between mobile, soft and desk phone (Jabra GO 6470) - Crystal clear noise-free audio with wideband sound, DSP⁵ and 2 microphone Noise Blackout™ 	<ul style="list-style-type: none"> - Dedicated button for answer/end call - Separate buttons to mute call or turn volume up or down - Superior sound quality with DSP⁵ - USB interface for IP telephony 	<ul style="list-style-type: none"> - 2 X Multiuse connectivity: switch seamlessly between desk and softphone (Jabra GN9350e) - Superb sound quality with DSP⁴ and Jabra SafeTone for Jabra GN9350e - Advanced digital encryption - USB interface for IP telephony - LCD display and conferencing capability for Jabra GN9350e 	<ul style="list-style-type: none"> - Connects simultaneously to mobile phones and PC softphones - Including plug and play Jabra LINK™ 320 Bluetooth USB adapter for PC/VoIP connectivity and Jabra PC Suite
REMOTE FUNCTIONS	Answer/end calls, ringtone, voice dialing, reject call, redial, swap between calls, touch sensor for volume control, mute	Answer/end calls, ringtone, voice dialing, reject call, redial, swap between calls, touch sensor for volume control, mute	Answer/end calls, ringtone, voice dialing, reject call, redial, swap between calls, touch sensor for volume control, mute	Answer/end calls, ringtone, ringer in base, mute, volume	Answer/end calls, ringtone, mute, volume	Answer/end calls, ringtone, redial, swap between calls, reject call, mute

¹ Range and talk time depends on the device with which the headset is connected

² Earhook and neckband only with Jabra PRO 9470. Earhook only with Jabra PRO 9460 Mono and Jabra PRO 9450. Jabra PRO 9465 Duo and Jabra PRO 9460 Duo, headband only. Earhook and neckband are accessories for Jabra PRO 930

³ Neckband is an accessory for Jabra PRO 9460 Mono, Jabra PRO 9450, Jabra GO 6400 Series and Jabra GN9330e USB

⁴ Digital Signal Processing (DSP) removes impurities from incoming signal, thereby enriching the sound quality. Auto-volume automatically eliminates fluctuations, adjusting the speaker volume of all incoming calls to the same, consistent level

⁵ This does not apply to Jabra PRO 9450

JABRA CORDED SOLUTIONS FOR SOFTPHONES



HEADSET	JABRA BIZ™ 2400 USB	JABRA GN2000 USB	JABRA BIZ™ 1900 USB	JABRA UC VOICE 550 JABRA UC VOICE 150	JABRA UC VOICE 250	JABRA SPEAK™ 410	JABRA DIAL 520 MS	JABRA LINK™ 280 JABRA LINK™ 220
	THE ULTIMATE CORDED EXPERIENCE	WIDEBAND VOIP FOR SUPERB CALL CLARITY	SIMPLE TO USE. VALUE-LINE USB SOLUTIONS	DESIGNED SPECIFICALLY FOR UC DEPLOYMENTS	DESIGNED SPECIFICALLY FOR UC DEPLOYMENTS	YOUR PORTABLE UC CONFERENCE ROOM	PLUG-AND-PLAY HANDSET SOLUTION	
CONNECTIVITY								
BLUETOOTH CAPABLE	Yes	No	No	No	No	No	No	Yes, Jabra LINK™ 280 has Bluetooth connection
WEARING STYLE	Headband	Headband	Headband	Headband	Behind the ear	-	Handset	Dependant on headset top selected
NOISE-CANCELING MICROPHONE	Yes	Yes	Yes	Yes	Yes	No, 360° Omni Directional	No	Dependant on headset top selected
AUDIO QUALITY	Hi-fi	Wideband	Wideband	Wideband	Wideband	Wideband	Wideband	Wideband
MONO AND DUO VERSIONS AVAILABLE	Yes	Yes	Yes	Yes	No, mono only	Dependant on headset top connected to headset port	No	Dependant on headset top selected
KEY BENEFITS	<ul style="list-style-type: none"> - Hi-fi audio quality with Neodymium speakers - Break-proof FreeSpin boom with 360°-plus rotation - USB toggle wheel and programmable softbuttons - Multiuse connectivity: switch seamlessly between softphone and mobile phone. Bluetooth connection for mobile phone - Safeguards your hearing and helps comply with the strict Noise-at-work legislation through the Jabra SafeTone™ technology 	<ul style="list-style-type: none"> - Full wideband frequency for superior call clarity - PeakStop™ technology protects users against noise - Sturdy construction for heavy duty use 	<ul style="list-style-type: none"> - Lightweight, sturdy design and professional quality - Plug-and-play USB solution with wideband sound - Noise-canceling microphone for noisy environments 	<ul style="list-style-type: none"> - Quality UC solutions - Plug-and-play USB connectivity - Maximum comfort for all-day-use - Compatible with all leading UC platforms - True wideband audio quality for clearer calls 	<ul style="list-style-type: none"> - Quality UC solutions - Plug-and-play USB connectivity - Perfect for traveling, comes with a travel pouch - Compatible with all leading UC platforms - True wideband audio quality for clearer calls 	<ul style="list-style-type: none"> - Ideal for one-to-one and small-group conference calls - Compatible with leading UC systems and VoIP clients - Optimized for Microsoft® Lync™ - Headset port for private calls - Built-in ringer - True wideband sound - Compact design – integrated cable management 	<ul style="list-style-type: none"> - True wideband audio performance - Intuitive, plug-and-play usability - Dedicated answer/end and mute buttons for seamless integration with leading UC applications - LCD display 	<ul style="list-style-type: none"> - Plug-and-play USB - Safeguards your hearing and helps comply with the strict Noise-at-work legislation through Jabra SafeTone technology - 2 X Multiuse connectivity: switch seamlessly between softphone and mobile phone. Bluetooth connection for mobile phone² - Enable use of professional corded Jabra QD headsets - Clean and distortion-free digital audio quality - Jabra LINK™ 220, no Remote Call Control audio device only
REMOTE FUNCTIONS (REMOTE FUNCTIONS ARE SOFTPHONE SPECIFIC AND MAY VARY WITH YOUR APPLICATION)	Answer / end calls, mute, volume, two programmable buttons	Answer / end calls, mute, volume	Mute, volume	Answer / end calls, mute, volume	Answer / end calls, mute, volume	Answer / end calls, mute, volume	Answer / end calls, mute, volume	Answer/end calls ¹ , mute ¹ , volume ¹ , two programmable buttons ¹

¹ Only Jabra LINK™ 280

USB ADAPTERS FOR CORDED JABRA HEADSETS

Jabra USB adapters enable PC connectivity and softphone integration with Jabra's extensive range of Quick Disconnect (QD) corded headsets. The QD-to-USB adapters provide additional flexibility in situations where:

- Users communicate via both desk and softphone
- Users are migrating from desk to softphone
- Several users with individual headsets use the same workstation – i.e. contact centers

SUPERIOR AUDIO PERFORMANCE

The basic USB-to-headset adapter Jabra LINK™ 220 delivers superior audio quality and simplicity for your softphone. Digital Signal Processing (DSP) removes impurities from the call signal and improves the performance of even the most demanding IP applications. Moreover, Jabra LINK 220 offers full hearing protection with built in PeakStop™ and IntelliTone™ technologies. The two combined is called Jabra SafeTone™.

CALL CONTROL AT YOUR FINGERTIPS

For enhanced usability, Jabra LINK™ 280 features integrated call control buttons, so you can operate your softphone directly from the headset. The in-line controls on the cord allows you to enjoy quick, optimized use of your softphone application!

At the press of a button you can answer/end calls, hold calls, speed dial, adjust volume and mute the microphone. LED indicators quickly alert users to incoming calls as well as onhook/offhook, hold and mute status and new voice messages – provided that Jabra's Remote Call Control is implemented.

Furthermore, Jabra LINK 280 offers full hearing protection and has a built-in wireless Bluetooth connection that enables you to use your corded Jabra headset with your mobile phone!

COMPATIBILITY

Call control can also be enabled on Jabra USB adapters through specific softphone drivers available in Jabra PC Suite. For a complete list of compatible softphones and to download Jabra PC Suite at no charge go to www.jabra.com/pcsuite.

Jabra USB adapters are certified for use on Windows operating systems and supports the following QD headsets:

Jabra BIZ™ 1900 Series, Jabra GN2000 Series, Jabra BIZ™ 2400 Series.

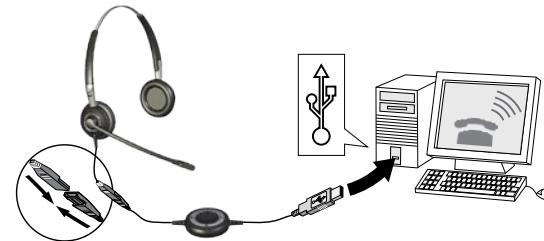
PRODUCTS	JABRA LINK™ 280	JABRA LINK™ 220
CONNECTIVITY		
JABRA SAFETONE	Yes	Yes
DIGITAL SIGNAL PROCESSING	Yes	Yes
VOLUME CONTROL	Yes	-
CALL ANSWER/END BUTTON	Yes	-
PROGRAMMABLE BUTTONS	Yes	-
BLUETOOTH	Yes	-



Jabra LINK 280



Jabra LINK 220



How to connect the adapter to your headset and PC

¹ Jabra LINK 280 has 4 buttons. 1 for dedicated call answer/end functionality and 1 for microphone mute. Last 2 buttons are programmable via Jabra PC Suite. Current option is speaker mute plus mobile phone answer/end call functionality.

AASTRA SOFTPHONES AND JABRA HEADSETS



	JABRA PRO™ 9400 SERIES JABRA GO™ 6470 JABRA PRO™ 930 DECT/Bluetooth technology	JABRA GN9300e USB SERIES DECT technology	JABRA GO™ 6430 JABRA GO™ 660 Bluetooth technology	JABRA BIZ™ 2400 USB JABRA GN2000 USB JABRA BIZ™ 1900 USB ²	JABRA UC VOICE 550 JABRA UC VOICE 250 JABRA UC VOICE 150	JABRA SPEAK™ 410 JABRA DIAL™ 520 MS	JABRA LINK™ 280 JABRA LINK™ 220
OPENPHONE 65 IPC OPENPHONE 7X IPC AASTRA 2700 IP/2770 IP	Compatible as audio device with volume and mute control ¹	Remote Call Control No additional drivers needed SoftPhone IPC from SW 1.0.0.73	Compatible as audio device with volume and mute control ¹	Compatible as audio device with volume and mute control ¹	Compatible as audio device with volume and mute control ¹	Compatible as audio device with volume and mute control ¹	Jabra LINK 280 Compatible as audio device with volume and mute control ¹ Jabra LINK 220 Compatible as audio device ¹
AASTRA 2380IP	Remote Call Control with Jabra PC Suite 2.2.9	Remote Call Control with Jabra PC Suite 2.2.9	Remote Call Control with Jabra PC Suite 2.2.9	Remote Call Control with Jabra PC Suite 2.2.9	Remote Call Control with Jabra PC Suite 2.2.9	Remote Call Control with Jabra PC Suite 2.2.9	Jabra LINK 280 Remote Call Control with Jabra PC Suite 2.2.9 Jabra LINK 220 Compatible as audio device ¹
BACKSTAGE OFFICE 1600/1600IP	Compatible as audio device with volume and mute control ¹	Compatible as audio device with volume and mute control ¹	Compatible as audio device with volume and mute control ¹	Compatible as audio device with volume and mute control ¹	Compatible as audio device with volume and mute control ¹	Compatible as audio device with volume and mute control ¹	Jabra LINK 280 Compatible as audio device with volume and mute control ¹ Jabra LINK 220 Compatible as audio device ¹
BACKSTAGE PLATINUM 1.1 From version 1.1.0.11	Remote Call Control with Jabra PC Suite 2.2.9	Remote Call Control with Jabra PC Suite 2.2.9	Remote Call Control with Jabra PC Suite 2.2.9	Remote Call Control with Jabra PC Suite 2.2.9	Remote Call Control with Jabra PC Suite 2.2.9	Remote Call Control with Jabra PC Suite 2.2.9	Remote Call Control with Jabra PC Suite 2.2.9 Jabra LINK 220 Compatible as audio device ¹

¹ See page 31

² No Remote Call Control button. Only volume and mute control

ALCATEL-LUCENT SOFTPHONES AND JABRA HEADSETS



	JABRA PRO™ 9400 SERIES JABRA GO™ 6470 JABRA PRO™ 930 DECT/Bluetooth technology	JABRA GN9300e USB SERIES DECT technology	JABRA GO™ 6430 JABRA GO™ 660 Bluetooth technology	JABRA BIZ™ 2400 USB JABRA GN2000 USB JABRA BIZ™ 1900 USB ²	JABRA UC VOICE 550 JABRA UC VOICE 250 JABRA UC VOICE 150	JABRA SPEAK™ 410 JABRA DIAL™ 520 MS	JABRA LINK™ 280 JABRA LINK™ 220
SOFTPHONE 4980	Compatible as audio device with volume and mute control ¹	Remote Call Control No additional drivers needed Win XP with 4980 R 4.021b and OXE R7.1 (f53017a)	Compatible as audio device with volume and mute control ¹	Compatible as audio device with volume and mute control ¹	Compatible as audio device with volume and mute control ¹	Compatible as audio device with volume and mute control ¹	Jabra LINK 280 Compatible as audio device with volume and mute control ¹ Jabra LINK 220 Compatible as audio device ¹
PIMPHONY	Compatible as audio device with volume and mute control ¹	Remote Call Control No additional drivers needed Win XP SP1, OXO 535.1 and Pimphony R6.1 (build 1210) Win 2000SP4, OXO 410.37.1 and Pimphony R5.1 (build 363)	Compatible as audio device with volume and mute control ¹	Compatible as audio device with volume and mute control ¹	Compatible as audio device with volume and mute control ¹	Compatible as audio device with volume and mute control ¹	Jabra LINK 280 Compatible as audio device with volume and mute control ¹ Jabra LINK 220 Compatible as audio device ¹
IP DESKTOP SOFTPHONE	Compatible as audio device with volume and mute control ¹	Remote Call Control No additional drivers needed	Compatible as audio device with volume and mute control ¹	Compatible as audio device with volume and mute control ¹	Compatible as audio device with volume and mute control ¹	Compatible as audio device with volume and mute control ¹	Jabra LINK 280 Compatible as audio device with volume and mute control ¹ Jabra LINK 220 Compatible as audio device ¹
MY INSTANT COMMUNICATOR	Compatible as audio device with volume and mute control ¹	Remote Call Control No additional drivers needed	Compatible as audio device with volume and mute control ¹	Compatible as audio device with volume and mute control ¹	Compatible as audio device with volume and mute control ¹	Compatible as audio device with volume and mute control ¹	Jabra LINK 280 Compatible as audio device with volume and mute control ¹ Jabra LINK 220 Compatible as audio device ¹
MY TEAMWORK	Compatible as audio device with volume and mute control ¹	Compatible as audio device with volume and mute control ¹	Compatible as audio device with volume and mute control ¹	Compatible as audio device with volume and mute control ¹	Compatible as audio device with volume and mute control ¹	Compatible as audio device with volume and mute control ¹	Jabra LINK 280 Compatible as audio device with volume and mute control ¹ Jabra LINK 220 Compatible as audio device ¹

JABRA EHS GUIDE

Discover freedom with a wireless Jabra headset optimized for your desk phone!
www.jabra.com/ehsguide

¹ See page 31
² No Remote Call Control button. Only volume and mute control

AVAYA SOFTPHONES AND JABRA HEADSETS



	JABRA PRO™ 9400 SERIES JABRA GO™ 6470 JABRA PRO™ 930 DECT/Bluetooth technology	JABRA GN9300e USB SERIES DECT technology	JABRA GO™ 6430 JABRA GO™ 660 Bluetooth technology	JABRA BIZ™ 2400 USB JABRA GN2000 USB JABRA BIZ™ 1900 USB ²	JABRA UC VOICE 550 JABRA UC VOICE 250 JABRA UC VOICE 150	JABRA SPEAK™ 410 JABRA DIAL™ 520 MS	JABRA LINK™ 280 JABRA LINK™ 220
ACM IP SOFTPHONE Version R6 or higher on Windows XP	Remote Call Control with Jabra PC Suite 2.2.9	Remote Call Control with Jabra PC Suite 2.2.9	Remote Call Control with Jabra PC Suite 2.2.9	Remote Call Control with Jabra PC Suite 2.2.9	Remote Call Control with Jabra PC Suite 2.2.9	Remote Call Control with Jabra PC Suite 2.2.9	Jabra LINK 280 Remote Call Control with Jabra PC Suite 2.2.9 Jabra LINK 220 Compatible as audio device ¹
IP AGENT Version R6 or higher on Windows XP	Remote Call Control with Jabra PC Suite 2.2.9	Remote Call Control with Jabra PC Suite 2.2.9	Remote Call Control with Jabra PC Suite 2.2.9	Remote Call Control with Jabra PC Suite 2.2.9	Remote Call Control with Jabra PC Suite 2.2.9	Remote Call Control with Jabra PC Suite 2.2.9	Jabra LINK 280 Remote Call Control with Jabra PC Suite 2.2.9 Jabra LINK 220 Compatible as audio device ¹
AVAYA ONE-X COMMUNICATOR Version 5.2 or higher on Windows XP/Vista/7 in 32/64 bit	Remote Call Control with Jabra PC Suite 2.2.9	Remote Call Control with Jabra PC Suite 2.2.9	Remote Call Control with Jabra PC Suite 2.2.9	Remote Call Control with Jabra PC Suite 2.2.9	Remote Call Control with Jabra PC Suite 2.2.9	Remote Call Control with Jabra PC Suite 2.2.9	Jabra LINK 280 Remote Call Control with Jabra PC Suite 2.2.9 Jabra LINK 220 Compatible as audio device ¹
AVAYA ONE-X™ AGENT Version 2 or higher	Remote Call Control with Jabra PC Suite 2.2.9	Remote Call Control with Jabra PC Suite 2.2.9	Remote Call Control with Jabra PC Suite 2.2.9	Remote Call Control with Jabra PC Suite 2.2.9	Remote Call Control with Jabra PC Suite 2.2.9	Remote Call Control with Jabra PC Suite 2.2.9	Jabra LINK 280 Remote Call Control with Jabra PC Suite 2.2.9 Jabra LINK 220 Compatible as audio device ¹
2050 IP SOFTPHONE	Compatible as audio device with volume and mute control ¹	Compatible as audio device with volume and mute control ¹	Compatible as audio device with volume and mute control ¹	Compatible as audio device with volume and mute control ¹	Compatible as audio device with volume and mute control ¹	Compatible as audio device with volume and mute control ¹	Jabra LINK 280 Compatible as audio device with volume and mute control ¹ Jabra LINK 220 Compatible as audio device ¹
IP OFFICE VIDEO SOFTPHONE³ From version 3.2.3.13	Remote call control No additional drivers needed	Remote Call Control No additional drivers needed	Remote Call Control No additional drivers needed	Remote Call Control No additional drivers needed Jabra BIZ 1900 USB Compatible as audio device with volume and mute control ¹	Remote Call Control No additional drivers needed	Remote Call Control No additional drivers needed	Jabra LINK 280 Remote Call Control No additional drivers needed Jabra LINK 220 Compatible as audio device ¹

¹ See page 31

² No Remote Call Control button. Only volume and mute control

³ IP Office Video Softphone Solution cannot co-exist with Microsoft® Office Communicator or Microsoft® Lync™. Users should avoid having more than one Jabra device plugged in at the same time.

CISCO SOFTPHONES AND JABRA HEADSETS



	JABRA PRO™ 9400 SERIES JABRA GO™ 6470 JABRA PRO™ 930 DECT/Bluetooth technology	JABRA GN9300e USB SERIES DECT technology	JABRA GO™ 6430 JABRA GO™ 660 Bluetooth technology	JABRA BIZ™ 2400 USB JABRA GN2000 USB JABRA BIZ™ 1900 USB ²	JABRA UC VOICE 550 JABRA UC VOICE 250 JABRA UC VOICE 150	JABRA SPEAK™ 410 JABRA DIAL™ 520 MS	JABRA LINK™ 280 JABRA LINK™ 220
CISCO IP COMMUNICATOR (CIPC) CIPC 7.0(2) or less require Jabra PC Suite for Remote Call Control functionality	Remote Call Control with Jabra PC Suite From IP Communicator 2.0.1.1 Remote Call Control No additional drivers needed From IP Communicator 7.0(3)	Remote Call Control with Jabra PC Suite From IP Communicator 2.0.1.1 Remote Call Control No additional drivers needed From IP Communicator 7.0(3)	Remote Call Control with Jabra PC Suite From IP Communicator 2.0.1.1 Remote Call Control No additional drivers needed From IP Communicator 7.0(3)	Jabra GN2000 CIPC Remote Call Control No additional driver needed From IP Communicator 2.1.4 Remote Call Control with Jabra PC Suite From IP Communicator 2.0.1.1 Remote Call Control No additional drivers needed From IP Communicator 7.0(3)	Remote Call Control with Jabra PC Suite 2.2.9 From IP Communicator 2.0.1.1 Remote Call Control No additional drivers needed From IP Communicator 7.0(3)	Remote Call Control with Jabra PC Suite From IP Communicator 2.0.1.1 Remote Call Control No additional drivers needed From IP Communicator 7.0(3)	Jabra LINK 280 Remote Call Control with Jabra PC Suite From IP Communicator 2.0.1.1 Remote Call Control No additional drivers needed From IP Communicator 7.0(3) Jabra LINK 220 Compatible as audio device ¹
CISCO UNIFIED PERSONAL COMMUNICATOR (CUPC)	Remote Call Control with Jabra PC Suite 2.4.3	Remote Call Control with Jabra PC Suite 2.4.3	Remote Call Control with Jabra PC Suite 2.4.3	Remote Call Control with Jabra PC Suite 2.4.3	Remote Call Control with Jabra PC Suite 2.4.3	Remote Call Control with Jabra PC Suite 2.4.3	Jabra LINK 280 Remote Call Control with Jabra PC Suite 2.4.3 Jabra LINK 220 Compatible as audio device ¹
CISCO UC INTEGRATION™ FOR MICROSOFT® LYNC™ (CUCILync)	Remote Call Control with Jabra PC Suite 2.4.3	Remote Call Control with Jabra PC Suite 2.4.3	Remote Call Control with Jabra PC Suite 2.4.3	Remote Call Control with Jabra PC Suite 2.4.3	Remote Call Control with Jabra PC Suite 2.4.3	Remote Call Control with Jabra PC Suite 2.4.3	Jabra LINK 280 Remote Call Control with Jabra PC Suite 2.4.3 Jabra LINK 220 Compatible as audio device ¹
CISCO WEBEX CONNECT 7.1.1	Remote Call Control with Jabra PC Suite 2.7.7.03	Remote Call Control with Jabra PC Suite 2.7.7.03	Remote Call Control with Jabra PC Suite 2.7.7.03	Remote Call Control with Jabra PC Suite 2.7.7.03	Remote Call Control with Jabra PC Suite 2.7.7.03	Remote Call Control with Jabra PC Suite 2.7.7.03	Jabra LINK 280 Remote Call Control with Jabra PC Suite 2.4.3 Jabra LINK 220 Compatible as audio device ¹

¹ See page 31

² No Remote Call Control button. Only volume and mute control

Please note: Jabra PC Suite provides call control for Cisco Unified Personal Communication (CUPC), Cisco Unified Communication Integration for Microsoft (CUCIMOC), Cisco Unified Communication Integration for Microsoft Lync (CUCILync) and Cisco WebEx Connect 7.1.1 or above. In addition, Cisco IP Communicator 7.0(3) and later incorporates a "Plug and Play" driver for Jabra USB headsets and speakerphone

COUNTERPATH SOFTPHONES AND JABRA HEADSETS



	JABRA PRO™ 9400 SERIES JABRA GO™ 6470 JABRA PRO™ 930 DECT/Bluetooth technology	JABRA GN9300e USB SERIES DECT technology	JABRA GO™ 6430 JABRA GO™ 660 Bluetooth technology	JABRA BIZ™ 2400 USB JABRA GN2000 USB JABRA BIZ™ 1900 USB ²	JABRA UC VOICE 550 JABRA UC VOICE 250 JABRA UC VOICE 150	JABRA SPEAK™ 410 JABRA DIAL™ 520 MS	JABRA LINK™ 280 JABRA LINK™ 220
EYEBEAM	Compatible as audio device with volume and mute control ¹	Compatible as audio device with volume and mute control ¹	Compatible as audio device with volume and mute control ¹	Compatible as audio device with volume and mute control ¹	Compatible as audio device with volume and mute control ¹	Compatible as audio device with volume and mute control ¹	Jabra LINK 280 Compatible as audio device with volume and mute control ¹ Jabra LINK 220 Compatible as audio device ¹
BRIA 3 From version 3.1 or higher	Remote Call Control No additional drivers needed Jabra PRO™ 9450 Jabra PRO™ 930 Compatible as audio device ¹	Remote Call Control No additional drivers needed	Jabra GO 6430 Remote Call Control No additional drivers needed Jabra GO 660 Compatible as audio device ¹	Compatible as audio device with volume and mute control ¹	Compatible as audio device with volume and mute control ¹	Remote Call Control No additional drivers needed	Jabra LINK 280 Remote Call Control No additional drivers needed Jabra LINK 220 Compatible as audio device ¹
X-LITE 4	Remote Call Control No additional drivers needed Jabra PRO™ 9450 Jabra PRO™ 930 Compatible as audio device ¹	Remote Call Control No additional drivers needed	Jabra GO 6430 Remote Call Control No additional drivers needed Jabra GO 660 Compatible as audio device ¹	Compatible as audio device with volume and mute control ¹	Compatible as audio device with volume and mute control ¹	Remote Call Control No additional drivers needed	Jabra LINK 280 Remote Call Control No additional drivers needed Jabra LINK 220 Compatible as audio device ¹



¹ See page 31
² No Remote Call Control button. Only volume and mute control

DEUTSCHE TELEKOM SOFTPHONES AND JABRA HEADSETS



	JABRA PRO™ 9400 SERIES JABRA GO™ 6470 JABRA PRO™ 930 DECT/Bluetooth technology	JABRA GN9300e USB SERIES DECT technology	JABRA GO™ 6430 JABRA GO™ 660 Bluetooth technology	JABRA BIZ™ 2400 USB JABRA GN2000 USB JABRA BIZ™ 1900 USB ²	JABRA UC VOICE 550 JABRA UC VOICE 250 JABRA UC VOICE 150	JABRA SPEAK™ 410 JABRA DIAL™ 520 MS	JABRA LINK™ 280 JABRA LINK™ 220
OCTOCLIENT	Compatible as audio device with volume and mute control ¹	Remote Call Control No additional drivers needed From v. 5.1.141.0	Compatible as audio device with volume and mute control ¹	Compatible as audio device with volume and mute control ¹	Compatible as audio device with volume and mute control ¹	Compatible as audio device with volume and mute control ¹	Jabra LINK 280 Compatible as audio device with volume and mute control ¹ Jabra LINK 220 Compatible as audio device ¹
NETPHONE	Remote Call Control possible No additional drivers needed From SwyxWare 7.05	Remote Call Control. No additional drivers needed From SwyxWare 6.0	Jabra GO 6430 Remote Call Control No additional drivers needed From SwyxWare 7.05 Jabra GO 660 Remote Call Control No additional drivers needed From SwyxWare 6.11.1102	Compatible as audio device with volume and mute control ¹	Compatible as audio device with volume and mute control ¹	Compatible as audio device with volume and mute control ¹	Jabra LINK 280 Remote Call Control No additional drivers needed From SwyxWare 7.05 Jabra LINK 220 Compatible as audio device ¹
OCTOPHONE CME SOFTPHONE	Remote Call Control with Jabra PC Suite From version 2.0.1.1 Remote Call Control No additional drivers needed From version 7.0(3)	Remote Call Control with Jabra PC Suite From version 2.0.1.1 Remote Call Control No additional drivers needed From version 7.0(3)	Remote Call Control with Jabra PC Suite From version 2.0.1.1 Remote Call Control No additional drivers needed From version 7.0(3)	Jabra GN2000 CIPC Remote Call Control No additional driver needed From version 2.1.4 Remote Call Control with Jabra PC Suite From version 2.0.1.1 Remote Call Control No additional drivers needed From version 7.0(3)	Remote Call Control with Jabra PC Suite From version 2.0.1.1 Remote Call Control No additional drivers needed From version 7.0(3)	Remote Call Control with Jabra PC Suite From version 2.0.1.1 Remote Call Control No additional drivers needed From version 7.0(3)	Jabra LINK 280 Remote Call Control with Jabra PC Suite From version 2.0.1.1 Remote Call Control No additional drivers needed From version 7.0(3) Jabra LINK 220 Compatible as audio device ¹

¹ See page 31

² No Remote Call Control button. Only volume and mute control

GLOBAL IP TELECOMMUNICATIONS SOFTPHONES AND JABRA HEADSETS



	JABRA PRO™ 9400 SERIES JABRA GO™ 6470 JABRA PRO™ 930 DECT/Bluetooth technology	JABRA GN9300e USB SERIES DECT technology	JABRA GO™ 6430 JABRA GO™ 660 Bluetooth technology	JABRA BIZ™ 2400 USB JABRA GN2000 USB JABRA BIZ™ 1900 USB ²	JABRA UC VOICE 550 JABRA UC VOICE 250 JABRA UC VOICE 150	JABRA SPEAK™ 410 JABRA DIAL™ 520 MS	JABRA LINK™ 280 JABRA LINK™ 220
NINJA SIP SOFTCLIENT Version 3.0	Remote Call Control with Jabra PC Suite 2.2.9	Remote Call Control with Jabra PC Suite 2.2.9	Remote Call Control with Jabra PC Suite 2.2.9	Remote Call Control with Jabra PC Suite 2.2.9	Remote Call Control with Jabra PC Suite 2.2.9	Remote Call Control with Jabra PC Suite 2.2.9	Jabra LINK 280 Remote Call Control with Jabra PC Suite 2.2.9 Jabra LINK 220 Compatible as audio device ¹
HOME-COCKPIT PRODUCTS Version 2.0	Remote Call Control with Jabra PC Suite 2.2.9	Remote Call Control with Jabra PC Suite 2.2.9	Remote Call Control with Jabra PC Suite 2.2.9	Remote Call Control with Jabra PC Suite 2.2.9	Remote Call Control with Jabra PC Suite 2.2.9	Remote Call Control with Jabra PC Suite 2.2.9	Jabra LINK 280 Remote Call Control with Jabra PC Suite 2.2.9 Jabra LINK 220 Compatible as audio device ¹



¹ See page 31
² No Remote Call Control button. Only volume and mute control

IBM SOFTPHONES AND JABRA HEADSETS



	JABRA PRO™ 9400 SERIES JABRA GO™ 6470 JABRA PRO™ 930 DECT/Bluetooth technology	JABRA GN9300e USB SERIES DECT technology	JABRA GO™ 6430 JABRA GO™ 660 Bluetooth technology	JABRA BIZ™ 2400 USB JABRA GN2000 USB JABRA BIZ™ 1900 USB ²	JABRA UC VOICE 550 JABRA UC VOICE 250 JABRA UC VOICE 150	JABRA SPEAK™ 410 JABRA DIAL™ 520 MS	JABRA LINK™ 280 JABRA LINK™ 220
IBM SAMETIME Version 8.0.1	Remote Call Control with Jabra PC Suite	Remote Call Control with Jabra PC Suite	Remote Call Control with Jabra PC Suite	Remote Call Control with Jabra PC Suite	Remote Call Control with Jabra PC Suite	Remote Call Control with Jabra PC Suite	Jabra LINK 280 Remote Call Control with Jabra PC Suite 2.2.9 Jabra LINK 220 Compatible as audio device ¹
IBM SAMETIME UNIFIED TELEPHONY Version 8.5.2	Remote Call Control with Jabra PC Suite 2.7.703	Remote Call Control with Jabra PC Suite 2.7.703	Remote Call Control with Jabra PC Suite 2.7.703	Remote Call Control with Jabra PC Suite 2.7.703	Remote Call Control with Jabra PC Suite 2.7.703	Remote Call Control with Jabra PC Suite 2.7.703	Jabra LINK 280 Remote Call Control with Jabra PC Suite 2.7.703 Jabra LINK 220 Compatible as audio device ¹

CALCULATE YOUR ROI

The ROI calculator is a tool built by Jabra to make it easy for you to calculate the payback time for a headset. All you have to do is key in a few parameters (hours per day spent on the phone and average salary) and, based on this 7.5-minutes-per-hour average time saving, the tool will calculate the number of days until your customers' companies recoup their investment.

www.jabra.com/roi

¹ See page 31
² No Remote Call Control button. Only volume and mute control

IFM INFOMASTER SOFTPHONES AND JABRA HEADSETS



	JABRA PRO™ 9400 SERIES JABRA GO™ 6470 JABRA PRO™ 930 DECT/ <i>Bluetooth</i> technology	JABRA GN9300e USB SERIES DECT technology	JABRA GO™ 6430 JABRA GO™ 660 <i>Bluetooth</i> technology	JABRA BIZ™ 2400 USB JABRA GN2000 USB JABRA BIZ™ 1900 USB²	JABRA UC VOICE 550 JABRA UC VOICE 250 JABRA UC VOICE 150	JABRA SPEAK™ 410 JABRA DIAL™ 520 MS	JABRA LINK™ 280 JABRA LINK™ 220
PHONES ENTERPRISE SUITE	Compatible as audio device with volume and mute control ¹	Remote Call Control No additional drivers needed	Compatible as audio device with volume and mute control ¹	Compatible as audio device with volume and mute control ¹	Compatible as audio device with volume and mute control ¹	Compatible as audio device with volume and mute control ¹	Jabra LINK 280 Compatible as audio device with volume and mute control ¹ Jabra LINK 220 Compatible as audio device ¹



¹ See page 31
² No Remote Call Control button. Only volume and mute control

INNOVAPHONE SOFTPHONES AND JABRA HEADSETS



	JABRA PRO™ 9400 SERIES JABRA GO™ 6470 JABRA PRO™ 930 DECT/Bluetooth technology	JABRA GN9300e USB SERIES DECT technology	JABRA GO™ 6430 JABRA GO™ 660 Bluetooth technology	JABRA BIZ™ 2400 USB JABRA GN2000 USB JABRA BIZ™ 1900 USB ²	JABRA UC VOICE 550 JABRA UC VOICE 250 JABRA UC VOICE 150	JABRA SPEAK™ 410 JABRA DIAL™ 520 MS	JABRA LINK™ 280 JABRA LINK™ 220
SOFTWAREPHONE	Compatible as audio device with volume and mute control ¹	Remote Call Control No additional drivers needed From v. 5.01 SR2	Compatible as audio device with volume and mute control ¹	Compatible as audio device with volume and mute control ¹	Compatible as audio device with volume and mute control ¹	Compatible as audio device with volume and mute control ¹	Jabra LINK 280 Compatible as audio device with volume and mute control ¹ Jabra LINK 220 Compatible as audio device ¹

PLUG-AND-PLAY WITH LEADING UNIFIED COMMUNICATIONS APPLICATIONS

Unified Communications integrates technologies such as voice, email and instant messaging and facilitates enhanced productivity and collaboration by unifying and streamlining the way we communicate. Our headsets are plug-and-play with all leading Unified Communications applications.

www.jabra.com/uc



¹ See page 31
² No Remote Call Control button. Only volume and mute control

IS COORD SOFTPHONES AND JABRA HEADSETS



	JABRA PRO™ 9400 SERIES JABRA GO™ 6470 JABRA PRO™ 930 DECT/Bluetooth technology	JABRA GN9300e USB SERIES DECT technology	JABRA GO™ 6430 JABRA GO™ 660 Bluetooth technology	JABRA BIZ™ 2400 USB JABRA GN2000 USB JABRA BIZ™ 1900 USB²	JABRA UC VOICE 550 JABRA UC VOICE 250 JABRA UC VOICE 150	JABRA SPEAK™ 410 JABRA DIAL™ 520 MS	JABRA LINK™ 280 JABRA LINK™ 220
IS-PHONE FOR IBM LOTUS NOTES/IBM SAMETIME 8.7 - For Windows	Remote Call Control possible No additional drivers needed	Remote Call Control. No additional drivers needed	Jabra GO 6430 Remote Call Control No additional drivers needed Jabra GO 660 Compatible as audio device with volume and mute control¹	Jabra BIZ 2400 USB Remote Call Control No additional drivers needed Jabra BIZ 1900 USB Jabra GN2000 USB Compatible as audio device with volume and mute control¹	Remote Call Control. No additional drivers needed	Remote Call Control. No additional drivers needed	Jabra LINK 280 Remote Call Control No additional drivers needed Jabra LINK 220 Compatible as audio device¹
IS-PHONE FOR IBM LOTUS NOTES/IBM SAMETIME 8.7 - For Apple OS-X	Remote Call Control possible No additional drivers needed	Compatible as audio device with volume and mute control¹	Jabra GO 6430 Remote Call Control No additional drivers needed Jabra GO 660 Compatible as audio device with volume and mute control¹	Jabra BIZ 2400 USB Remote Call Control No additional drivers needed Jabra BIZ 1900 USB Jabra GN2000 USB Compatible as audio device with volume and mute control¹	Remote Call Control. No additional drivers needed	Remote Call Control. No additional drivers needed	Jabra LINK 280 Remote Call Control No additional drivers needed Jabra LINK 220 Compatible as audio device¹

See next page for more IS Coord solutions

¹ See page 31
² No Remote Call Control button. Only volume and mute control

IS COORD SOFTPHONES AND JABRA HEADSETS



	JABRA PRO™ 9400 SERIES JABRA GO™ 6470 JABRA PRO™ 930 DECT/Bluetooth technology	JABRA GN9300e USB SERIES DECT technology	JABRA GO™ 6430 JABRA GO™ 660 Bluetooth technology	JABRA BIZ™ 2400 USB JABRA GN2000 USB JABRA BIZ™ 1900 USB ²	JABRA UC VOICE 550 JABRA UC VOICE 250 JABRA UC VOICE 150	JABRA SPEAK™ 410 JABRA DIAL™ 520 MS	JABRA LINK™ 280 JABRA LINK™ 220
IS-PHONE PORTABLE 8.7 - For Windows	Remote Call Control possible No additional drivers needed	Remote Call Control. No additional drivers needed	Jabra GO 6430 Remote Call Control No additional drivers needed Jabra GO 660 Compatible as audio device with volume and mute control ¹	Jabra BIZ 2400 USB Remote Call Control No additional drivers needed Jabra BIZ 1900 USB Jabra GN2000 USB Compatible as audio device with volume and mute control ¹	Remote Call Control. No additional drivers needed	Remote Call Control. No additional drivers needed	Jabra LINK 280 Remote Call Control No additional drivers needed Jabra LINK 220 Compatible as audio device ¹
IS-PHONE PORTABLE 8.7 - For Apple OS-X	Remote Call Control possible No additional drivers needed	Compatible as audio device with volume and mute control ¹	Jabra GO 6430 Remote Call Control No additional drivers needed Jabra GO 660 Compatible as audio device with volume and mute control ¹	Jabra BIZ 2400 USB Remote Call Control No additional drivers needed Jabra BIZ 1900 USB Jabra GN2000 USB Compatible as audio device with volume and mute control ¹	Remote Call Control. No additional drivers needed	Remote Call Control. No additional drivers needed	Jabra LINK 280 Remote Call Control. No additional drivers needed Jabra LINK 220 Compatible as audio device ¹
IS-PHONE COMMUNICATOR 2.8 - For Windows	Remote Call Control possible No additional drivers needed	Remote Call Control. No additional drivers needed	Jabra GO 6430 Remote Call Control No additional drivers needed Jabra GO 660 Compatible as audio device with volume and mute control ¹	Jabra BIZ 2400 USB Remote Call Control No additional drivers needed Jabra BIZ 1900 USB Jabra GN2000 USB Compatible as audio device with volume and mute control ¹	Remote Call Control. No additional drivers needed	Remote Call Control. No additional drivers needed	Jabra LINK 280 Remote Call Control. No additional drivers needed Jabra LINK 220 Compatible as audio device ¹

¹ See page 31

² No Remote Call Control button. Only volume and mute control

MICROSOFT® SOFTPHONES AND JABRA HEADSETS



	JABRA PRO™ 9400 SERIES JABRA GO™ 6470 JABRA PRO™ 930 DECT/Bluetooth technology	JABRA GN9300e USB SERIES DECT technology	JABRA GO™ 6430 JABRA GO™ 660 Bluetooth technology	JABRA BIZ™ 2400 USB JABRA GN2000 USB JABRA BIZ™ 1900 USB ²	JABRA UC VOICE 550 JABRA UC VOICE 250 JABRA UC VOICE 150	JABRA SPEAK™ 410 JABRA DIAL™ 520 MS	JABRA LINK™ 280 JABRA LINK™ 220
MICROSOFT® OFFICE COMMUNICATOR	Remote Call Control No additional drivers needed OC/Lync™-versions or min. VP2 ³ required	Remote Call Control No additional drivers needed OC/Lync™-versions only	Jabra GO 6430 Remote Call Control No additional drivers needed	Jabra BIZ 2400 MS USB Jabra GN2000 MS USB Remote Call Control No additional drivers needed	Remote Call Control No additional drivers needed	Remote Call Control No additional drivers needed	Jabra LINK 280 Remote Call Control No additional drivers needed Jabra LINK 220 Compatible as audio device ¹
MICROSOFT® LYNC™	Remote Call Control No additional drivers needed OC/Lync™-versions or min. VP2 ³ required	Remote Call Control No additional drivers needed OC/Lync™-versions only	Jabra GO 6430 Remote Call Control No additional drivers needed Jabra GO 660 Remote Call Control No additional drivers needed	Jabra BIZ 2400 MS USB Jabra GN2000 MS USB Remote Call Control No additional drivers needed	Remote Call Control No additional drivers needed	Remote Call Control No additional drivers needed	Jabra LINK 280 Remote Call Control No additional drivers needed Jabra LINK 220 Compatible as audio device ¹

PLUG-AND-PLAY WITH LEADING UNIFIED COMMUNICATIONS APPLICATIONS

Unified Communications integrates technologies such as voice, email and instant messaging and facilitates enhanced productivity and collaboration by unifying and streamlining the way we communicate. Our headsets are plug-and-play with all leading Unified Communications applications.

www.jabra.com/uc

¹ See page 31
² No Remote Call Control button. Only volume and mute control
³ Value Pack 2 and Value Pack 3 can be downloaded via Jabra PC Suite.

PHONER SOFTPHONES AND JABRA HEADSETS



	JABRA PRO™ 9400 SERIES JABRA GO™ 6470 JABRA PRO™ 930 <i>DECT/Bluetooth technology</i>	JABRA GN9300e USB SERIES <i>DECT technology</i>	JABRA GO™ 6430 JABRA GO™ 660 <i>Bluetooth technology</i>	JABRA BIZ™ 2400 USB JABRA GN2000 USB JABRA BIZ™ 1900 USB²	JABRA UC VOICE 550 JABRA UC VOICE 250 JABRA UC VOICE 150	JABRA SPEAK™ 410 JABRA DIAL™ 520 MS	JABRA LINK™ 280 JABRA LINK™ 220
PHONER	Compatible as audio device with volume and mute control ¹	Remote Call Control No additional drivers needed	Compatible as audio device with volume and mute control ¹	Compatible as audio device with volume and mute control ¹	Compatible as audio device with volume and mute control ¹	Compatible as audio device with volume and mute control ¹	Jabra LINK 280 Compatible as audio device with volume and mute control ¹ Jabra LINK 220 Compatible as audio device ¹



¹ See page 31
² No Remote Call Control button. Only volume and mute control

SAP SOFTPHONES AND JABRA HEADSETS



	JABRA PRO™ 9400 SERIES JABRA GO™ 6470 JABRA PRO™ 930 DECT/Bluetooth technology	JABRA GN9300e USB SERIES DECT technology	JABRA GO™ 6430 JABRA GO™ 660 Bluetooth technology	JABRA BIZ™ 2400 USB JABRA GN2000 USB JABRA BIZ™ 1900 USB ²	JABRA UC VOICE 550 JABRA UC VOICE 250 JABRA UC VOICE 150	JABRA SPEAK™ 410 JABRA DIAL™ 520 MS	JABRA LINK™ 280 JABRA LINK™ 220
SAP BCM	Remote Call Control. No additional drivers needed BCM 6.0, Service Pack 6 or later	Remote Call Control. No additional drivers needed BCM 6.0, Service Pack 6 or later	Jabra GO 6430 Remote Call Control No additional drivers needed BCM 6.0, Service Pack 6 or later Jabra GO 660 Compatible as audio device with volume and mute control ¹	Jabra BIZ 2400 USB Remote Call Control No additional drivers needed BCM 6.0, Service Pack 6 or later Jabra GN2000 USB Compatible as audio device with volume and mute control ¹	Remote Call Control No additional drivers needed BCM 6.0, Service Pack 6 or later	Compatible as audio device with volume and mute control ¹	Jabra LINK 280 Remote Call Control No additional drivers needed BCM 6.0, Service Pack 6 or later Jabra LINK 220 Compatible as audio device ¹



CALCULATE YOUR ROI

The ROI calculator is a tool built by Jabra to make it easy for you to calculate the payback time for a headset. All you have to do is key in a few parameters (hours per day spent on the phone and average salary) and, based on this 7.5-minutes-per-hour average time saving, the tool will calculate the number of days until your customers' companies recoup their investment.

www.jabra.com/roi

¹ See page 31
² No Remote Call Control button. Only volume and mute control

SIEMENS SOFTPHONES AND JABRA HEADSETS



	JABRA PRO™ 9400 SERIES JABRA GO™ 6470 JABRA PRO™ 930 DECT/Bluetooth technology	JABRA GN9300e USB SERIES DECT technology	JABRA GO™ 6430 JABRA GO™ 660 Bluetooth technology	JABRA BIZ™ 2400 USB JABRA GN2000 USB JABRA BIZ™ 1900 USB ²	JABRA UC VOICE 550 JABRA UC VOICE 250 JABRA UC VOICE 150	JABRA SPEAK™ 410 JABRA DIAL™ 520 MS	JABRA LINK™ 280 JABRA LINK™ 220
OPTICLIENT	Compatible as audio device with volume and mute control ¹	Remote Call Control No additional drivers needed	Compatible as audio device with volume and mute control ¹	Compatible as audio device with volume and mute control ¹	Compatible as audio device with volume and mute control ¹	Compatible as audio device with volume and mute control ¹	Jabra LINK 280 Compatible as audio device with volume and mute control ¹ Jabra LINK 220 Compatible as audio device ¹
OPENSCAPE UC APPLICATION DESKTOP CLIENT - Enterprise Edition	Remote Call Control via Jabra PC Suite v. 2.1.5.0	Remote Call Control No additional drivers needed	Remote Call Control via Jabra PC Suite v. 2.1.5.0	Remote Call Control via Jabra PC Suite v. 2.1.5.0	Remote Call Control via Jabra PC Suite v. 2.2.9.	Remote Call Control via Jabra PC Suite v. 2.1.5.0	Jabra LINK 280 Remote Call Control via Jabra PC Suite v. 2.1.5.0 Jabra LINK 220 Compatible as audio device ¹
OPENSCAPE DESKTOP CLIENT - Personal Edition	Remote Call Control via Jabra PC Suite v. 2.1.5.0	Remote Call Control No additional drivers needed	Remote Call Control via Jabra PC Suite v. 2.1.5.0	Remote Call Control via Jabra PC Suite v. 2.1.5.0	Remote Call Control via Jabra PC Suite v. 2.2.9.	Remote Call Control via Jabra PC Suite v. 2.1.5.0	Jabra LINK 280 Remote Call Control via Jabra PC Suite v. 2.1.5.0 Jabra LINK 220 Compatible as audio device ¹

JABRA EHS GUIDE

Discover freedom with a wireless Jabra headset optimized for your desk phone!
www.jabra.com/ehsguide

¹ See page 31
² No Remote Call Control button. Only volume and mute control

SKYPE SOFTPHONES AND JABRA HEADSETS



	JABRA PRO™ 9400 SERIES JABRA GO™ 6470 JABRA PRO™ 930 <i>DECT/Bluetooth technology</i>	JABRA GN9300e USB SERIES <i>DECT technology</i>	JABRA GO™ 6430 JABRA GO™ 660 <i>Bluetooth technology</i>	JABRA BIZ™ 2400 USB JABRA GN2000 USB JABRA BIZ™ 1900 USB²	JABRA UC VOICE 550 JABRA UC VOICE 250 JABRA UC VOICE 150	JABRA SPEAK™ 410 JABRA DIAL™ 520 MS	JABRA LINK™ 280 JABRA LINK™ 220
SKYPE SOFTPHONE	Remote Call Control with Jabra PC Suite 2.2.9 SKYPE v. 3.0. or above	Remote Call Control with Jabra PC Suite 2.2.9 SKYPE v. 3.0. or above	Remote Call Control with Jabra PC Suite 2.2.9 SKYPE v. 3.0. or above	Remote Call Control with Jabra PC Suite 2.2.9 SKYPE v. 3.2	Remote Call Control with Jabra PC Suite 2.2.9 SKYPE v. 3.2	Remote Call Control with Jabra PC Suite 2.2.9	Jabra LINK 280 Limited Remote Call Control with Jabra PC Suite 2.2.9 Jabra LINK 220 Compatible as audio device ¹



¹ See page 31
² No Remote Call Control button. Only volume and mute control

SNOM SOFTPHONES AND JABRA HEADSETS



	JABRA PRO™ 9400 SERIES JABRA GO™ 6470 JABRA PRO™ 930 DECT/ <i>Bluetooth</i> technology	JABRA GN9300e USB SERIES DECT technology	JABRA GO™ 6430 JABRA GO™ 660 <i>Bluetooth</i> technology	JABRA BIZ™ 2400 USB JABRA GN2000 USB JABRA BIZ™ 1900 USB²	JABRA UC VOICE 550 JABRA UC VOICE 250 JABRA UC VOICE 150	JABRA SPEAK™ 410 JABRA DIAL™ 520 MS	JABRA LINK™ 280 JABRA LINK™ 220
SNOM 360 SOFTPHONE 3.3	Remote Call Control No additional drivers needed	Remote Call Control No additional drivers needed	Jabra GO 6430 Remote Call Control No additional drivers needed Jabra GO 660 Compatible as audio device with volume and mute control ¹	Remote Call Control No additional driver needed	Remote Call Control No additional drivers needed	Compatible as audio device with volume and mute control ¹	Jabra LINK 280 Compatible as audio device with volume and mute control ¹ Jabra LINK 220 Compatible as audio device ¹



¹ See page 31
² No Remote Call Control button. Only volume and mute control

SWYX SOFTPHONES AND JABRA HEADSETS



	JABRA PRO™ 9400 SERIES JABRA GO™ 6470 JABRA PRO™ 930 DECT/Bluetooth technology	JABRA GN9300e USB SERIES DECT technology	JABRA GO™ 6430 JABRA GO™ 660 Bluetooth technology	JABRA BIZ™ 2400 USB JABRA GN2000 USB JABRA BIZ™ 1900 USB ²	JABRA UC VOICE 550 JABRA UC VOICE 250 JABRA UC VOICE 150	JABRA SPEAK™ 410 JABRA DIAL™ 520 MS	JABRA LINK™ 280 JABRA LINK™ 220
SWYXIT!	Remote Call Control No additional drivers needed From SwyxWare 7.05	Remote Call Control. No additional drivers needed From SwyxWare 6.0	Jabra GO 6430 Remote Call Control No additional drivers needed From SwyxWare 7.05 Jabra GO 660 Remote Call Control No additional drivers needed From SwyxWare 6.11.1102	Compatible as audio device with volume and mute control ¹	Compatible as audio device with volume and mute control ¹	Compatible as audio device with volume and mute control ¹	Jabra LINK 280 Remote Call Control No additional drivers needed From SwyxWare 7.05 Jabra LINK 220 Compatible as audio device ¹



¹ See page 31
² No Remote Call Control button. Only volume and mute control

TOSHIBA SOFTPHONES AND JABRA HEADSETS



	JABRA PRO™ 9400 SERIES JABRA GO™ 6470 JABRA PRO™ 930 DECT/Bluetooth technology	JABRA GN9300e USB SERIES DECT technology	JABRA GO™ 6430 JABRA GO™ 660 Bluetooth technology	JABRA BIZ™ 2400 USB JABRA GN2000 USB JABRA BIZ™ 1900 USB ²	JABRA UC VOICE 550 JABRA UC VOICE 250 JABRA UC VOICE 150	JABRA SPEAK™ 410 JABRA DIAL™ 520 MS	JABRA LINK™ 280 JABRA LINK™ 220
SOFTIPT SOFTPHONE	Jabra PRO 9400 Series Jabra PRO 930 Compatible as audio device ¹ Jabra GO 6470 Remote call control No additional drivers needed	Remote Call Control No additional drivers needed	Jabra GO 6430 Remote Call Control No additional drivers needed Jabra GO 660 Compatible as audio device ¹	Jabra BIZ 2400 Remote Call Control No additional drivers needed Jabra GN2000 USB and Jabra BIZ 1900 USB Compatible as audio device ¹	Remote Call Control No additional drivers needed	Compatible as audio device with volume and mute control ¹	Jabra LINK 280 Remote Call Control No additional drivers needed Jabra LINK 220 Compatible as audio device ¹
IP SOFTPHONE	Compatible as audio device with volume and mute control ¹	Compatible as audio device with volume and mute control ¹	Compatible as audio device with volume and mute control ¹	Compatible as audio device with volume and mute control ¹	Compatible as audio device with volume and mute control ¹	Compatible as audio device with volume and mute control ¹	Jabra LINK 280 Compatible as audio device with volume and mute control ¹ Jabra LINK 220 Compatible as audio device ¹



¹ See page 31
² No Remote Call Control button. Only volume and mute control

ZYLINC SOFTPHONES AND JABRA HEADSETS



	JABRA PRO™ 9400 SERIES JABRA GO™ 6470 JABRA PRO™ 930 DECT/Bluetooth technology	JABRA GN9300e USB SERIES DECT technology	JABRA GO™ 6430 JABRA GO™ 660 Bluetooth technology	JABRA BIZ™ 2400 USB JABRA GN2000 USB JABRA BIZ™ 1900 USB ²	JABRA UC VOICE 550 JABRA UC VOICE 250 JABRA UC VOICE 150	JABRA SPEAK™ 410 JABRA DIAL™ 520 MS	JABRA LINK™ 280 JABRA LINK™ 220
ZYCALL SWITCH 2.0	Remote Call Control with Jabra PC Suite 2.2.9	Remote Call Control with Jabra PC Suite 2.2.9	Remote Call Control with Jabra PC Suite 2.2.9	Remote Call Control with Jabra PC Suite 2.2.9	Remote Call Control with Jabra PC Suite 2.2.9	Remote Call Control with Jabra PC Suite 2.2.9	Jabra LINK 280 Remote Call Control with Jabra PC Suite 2.2.9 Jabra LINK 220 Compatible as audio device ¹
ZYDESK OPERATOR Remote Call Control availability with Jabra PC Suite	Remote Call Control availability with Jabra PC Suite	Remote Call Control availability with Jabra PC Suite	Remote Call Control availability with Jabra PC Suite	Remote Call Control availability with Jabra PC Suite	Remote Call Control availability with Jabra PC Suite	Remote Call Control availability with Jabra PC Suite	Remote Call Control availability with Jabra PC Suite



¹ See page 31
² No Remote Call Control button. Only volume and mute control

3CX SOFTPHONES AND JABRA HEADSETS



	JABRA PRO™ 9400 SERIES JABRA GO™ 6470 JABRA PRO™ 930 DECT/ <i>Bluetooth</i> technology	JABRA GN9300e USB SERIES DECT technology	JABRA GO™ 6430 JABRA GO™ 660 <i>Bluetooth</i> technology	JABRA BIZ™ 2400 USB JABRA GN2000 USB JABRA BIZ™ 1900 USB²	JABRA UC VOICE 550 JABRA UC VOICE 250 JABRA UC VOICE 150	JABRA SPEAK™ 410 JABRA DIAL™ 520 MS	JABRA LINK™ 280 JABRA LINK™ 220
3CXPHONE 5	Remote Call Control with Jabra PC Suite 2.2.9	Remote Call Control with Jabra PC Suite 2.2.9	Remote Call Control with Jabra PC Suite 2.2.9	Remote Call Control with Jabra PC Suite 2.2.9	Remote Call Control with Jabra PC Suite 2.2.9	Remote Call Control with Jabra PC Suite 2.2.9	Jabra LINK 280 Remote Call Control with Jabra PC Suite 2.2.9 Jabra LINK 220 Compatible as audio device ¹



¹ See page 31
² No Remote Call Control button. Only volume and mute control

SUPPORTED SOFTPHONES AND JABRA HEADSETS



MANUFACTURER	SUPPORTED SOFTPHONES	JABRA PRO™ 9400 SERIES, JABRA GO™ 6470, JABRA PRO™ 930 <i>DECT/Bluetooth technology</i>	JABRA GN9300e USB SERIES <i>DECT technology</i>	JABRA GO™ 6430, JABRA GO™ 660 <i>Bluetooth technology</i>	JABRA BIZ™ 2400 USB, JABRA GN2000 USB, JABRA BIZ™ 1900 USB ²	JABRA UC VOICE 550, JABRA UC VOICE 250, JABRA UC VOICE 150	JABRA SPEAK™ 410, JABRA DIAL 520 MS	JABRA LINK™ 280, JABRA LINK™ 220
 www.altigen.com	MAXCOMMUNICATOR	Compatible as audio device with volume and mute control ¹	Compatible as audio device with volume and mute control ¹	Compatible as audio device with volume and mute control ¹	Compatible as audio device with volume and mute control ¹	Compatible as audio device with volume and mute control ¹	Compatible as audio device with volume and mute control ¹	Jabra LINK 280 Compatible as audio device with volume and mute control ¹ Jabra LINK 220 Compatible as audio device ¹
 www.aspect.com	ENSEMBLEPRO	Compatible as audio device with volume and mute control ¹	Compatible as audio device with volume and mute control ¹	Compatible as audio device with volume and mute control ¹	Compatible as audio device with volume and mute control ¹	Compatible as audio device with volume and mute control ¹	Compatible as audio device with volume and mute control ¹	Jabra LINK 280 Compatible as audio device with volume and mute control ¹ Jabra LINK 220 Compatible as audio device ¹
 www.huawei.com	PERSONAL COMMUNICATIONS ASSISTANT	Compatible as audio device with volume and mute control ¹	Compatible as audio device with volume and mute control ¹	Compatible as audio device with volume and mute control ¹	Compatible as audio device with volume and mute control ¹	Compatible as audio device with volume and mute control ¹	Compatible as audio device with volume and mute control ¹	Jabra LINK 280 Compatible as audio device with volume and mute control ¹ Jabra LINK 220 Compatible as audio device ¹
 www.ineen.com	INEEN	Compatible as audio device with volume and mute control ¹	Compatible as audio device with volume and mute control ¹	Compatible as audio device with volume and mute control ¹	Compatible as audio device with volume and mute control ¹	Compatible as audio device with volume and mute control ¹	Compatible as audio device with volume and mute control ¹	Jabra LINK 280 Compatible as audio device with volume and mute control ¹ Jabra LINK 220 Compatible as audio device ¹
 www.inin.com	INTERACTIVE CLIENT	Compatible as audio device with volume and mute control ¹	Compatible as audio device with volume and mute control ¹	Compatible as audio device with volume and mute control ¹	Compatible as audio device with volume and mute control ¹	Compatible as audio device with volume and mute control ¹	Compatible as audio device with volume and mute control ¹	Jabra LINK 280 Compatible as audio device with volume and mute control ¹ Jabra LINK 220 Compatible as audio device ¹
 www.ipblue.com	VT GO	Compatible as audio device with volume and mute control ¹	Compatible as audio device with volume and mute control ¹	Compatible as audio device with volume and mute control ¹	Compatible as audio device with volume and mute control ¹	Compatible as audio device with volume and mute control ¹	Compatible as audio device with volume and mute control ¹	Jabra LINK 280 Compatible as audio device with volume and mute control ¹ Jabra LINK 220 Compatible as audio device ¹

¹ See page 31
² No Remote Call Control button. Only volume and mute control

SUPPORTED SOFTPHONES AND JABRA HEADSETS



MANUFACTURER	SUPPORTED SOFTPHONES	JABRA PRO™ 9400 SERIES, JABRA GO™ 6470 JABRA PRO™ 930 DECT/Bluetooth technology	JABRA GN9300e USB SERIES DECT technology	JABRA GO™ 6430 JABRA GO™ 660 Bluetooth technology	JABRA BIZ™ 2400 USB JABRA GN2000 USB JABRA BIZ™ 1900 USB ²	JABRA UC VOICE 550 JABRA UC VOICE 250 JABRA UC VOICE 150	JABRA SPEAK™ 410 JABRA DIAL 520 MS	JABRA LINK™ 280 JABRA LINK™ 220
 www.mitel.com	8602	Compatible as audio device with volume and mute control ¹	Compatible as audio device with volume and mute control ¹	Compatible as audio device with volume and mute control ¹	Compatible as audio device with volume and mute control ¹	Compatible as audio device with volume and mute control ¹	Compatible as audio device with volume and mute control ¹	Jabra LINK 280 Compatible as audio device with volume and mute control ¹ Jabra LINK 220 Compatible as audio device ¹
 www.nec.com	WEBDIAL/SP30	Compatible as audio device with volume and mute control ¹	Compatible as audio device with volume and mute control ¹	Compatible as audio device with volume and mute control ¹	Compatible as audio device with volume and mute control ¹	Compatible as audio device with volume and mute control ¹	Compatible as audio device with volume and mute control ¹	Jabra LINK 280 Compatible as audio device with volume and mute control ¹ Jabra LINK 220 Compatible as audio device ¹
 www.nortel.com	i2050	Compatible as audio device with volume and mute control ¹	Compatible as audio device with volume and mute control ¹	Compatible as audio device with volume and mute control ¹	Compatible as audio device with volume and mute control ¹	Compatible as audio device with volume and mute control ¹	Compatible as audio device with volume and mute control ¹	Jabra LINK 280 Compatible as audio device with volume and mute control ¹ Jabra LINK 220 Compatible as audio device ¹
 www.shoretel.com	SHOREWARE CALL MANAGER 8.1	Compatible as audio device with volume and mute control ¹	Compatible as audio device with volume and mute control ¹	Compatible as audio device with volume and mute control ¹	Compatible as audio device with volume and mute control ¹	Compatible as audio device with volume and mute control ¹	Compatible as audio device with volume and mute control ¹	Jabra LINK 280 Compatible as audio device with volume and mute control ¹ Jabra LINK 220 Compatible as audio device ¹

¹ See page 31
² No Remote Call Control button. Only volume and mute control

USE OF JABRA HEADSETS FOR VOICE AND AUDIO APPLICATIONS

You can use your Jabra headset with any softphone even if it does not support Remote Call Control (RCC) capabilities. Simply set up your Jabra headset as an audio device on your PC.

When your Jabra solution is connected to your PC as an audio device, you will always have volume and mute control on all Jabra solutions¹.

When your Jabra headset is set up as an audio device you can use it for many PC applications such as: internet telephony, web conferencing, voice recording, music listening, and speech recognition.

In today's economy companies are continually looking for ways to reduce expenses and save energy, while increasing employee productivity. Video, audio and web conferencing is one of the few technologies that can accomplish all three of these objectives. By combining real-time desktop sharing with video and audio conferencing, employees can interact, collaborate and exchange ideas without ever having to leave their office.

A key component of this application is a superior quality headset. Meeting attendees can take notes, mute their microphones and listen to presenters in wideband audio.

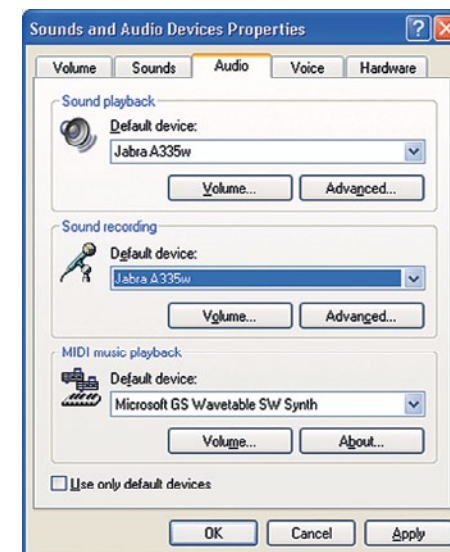
Jabra noise-canceling microphones with duo speaker headsets are the ideal solution for noisy conditions that are common in today's office environment.

Jabra headsets are designed to work seamlessly with the leading audio and web conferencing programs on the market.



SETTING UP JABRA HEADSET AS AN AUDIO DEVICE

1. Plug your Jabra USB headset or USB adapter into your PC
2. Windows will normally set the last connected USB audio device as default
3. To ensure that Windows has selected your Jabra USB device – do as follows:
 - A. Open Windows Control Panel and select “Sounds and Audio Devices Properties” see fig. 1
 - B. Select “Audio” tab and select your Jabra device in “Sound playback and Sound recording” see fig. 1
 - C. Open your PC audio application and start using your headset



Note: Some PC audio applications do not use Windows' default sound device. If this is the case you have to select your Jabra device as audio device in your PC application.

¹ Except for Jabra LINK™ 220. Has no buttons for volume and mute control

ORDER INFORMATION

WIRELESS SOLUTIONS

PRODUCTS	NA ITEM NO#	EMEA ITEM NO#	UK ITEM NO#	APAC ITEM NO#
JABRA PRO™ 9470	9470-66-904-105	9470-26-904-101	9470-26-904-102 ¹	9470-26-904-103 ²
JABRA PRO™ 9465	9465-69-804-105	9465-29-804-101	Not available in this region	9465-29-804-103 ²
JABRA PRO™ 9460	9460-65-707-105	9460-25-707-101	9460-25-707-102 ¹	9460-25-707-103 ²
JABRA PRO™ 9460 DUO	9460-69-707-105	9460-29-707-101	9460-29-707-102 ¹	9460-29-707-103 ²
JABRA PRO™ 9450	9450-65-507-105	9450-25-507-101	9450-25-507-102	9450-25-507-103
JABRA PRO™ 930	930-65-509-105	930-25-509-101	930-25-509-102	930-25-509-103
JABRA PRO™ 930 MS	930-65-503-105	930-25-503-101	930-25-503-102	930-25-503-103
JABRA GO™ 6470	6470-15-207-505 ³	6470-15-207-501	6470-15-207-502 ¹	6470-15-207-503 ²
JABRA GO™ 6430	6430-17-20-205 ³	6430-17-20-201	6430-17-20-202 ¹	6430-17-20-203 AUS/NZ 6430-17-20-205 JP 6430-17-20-206 PRC 6430-17-20-207 KR
JABRA GO™ 660	5078-228-209	5078-228-209	5078-228-209	5078-228-209
JABRA GN9350e	9326-607-405	9356-607-401	9356-607-402	9356-607-403 ²
JABRA GN9330e USB	9337-509-405	9337-509-401	9337-509-402	9337-509-403
JABRA GN9350e OC	9326-607-505	9356-607-501	9356-607-502	9356-607-503
JABRA GN9330e USB OC	9327-509-505	9337-509-501	9337-509-502	9337-509-503

¹ Jabra PRO™ 9400 + Jabra GO™ 6400 Series UK SKUs also available for sale in Hong Kong and Singapore

² AUS + NZ

³ Jabra GO 6400 Series NA SKUs also available for sale in Japan

⁴ Jabra BIZ 2400 USB Mono available in Q3 2011

⁵ Expected to be replaced by item no. 6293-823-309 middle of 2011

CORDED SOLUTIONS

PRODUCTS	NA ITEM NO#	EMEA ITEM NO#	UK ITEM NO#	APAC ITEM NO#
JABRA GN2000 USB DUO	20001-495	20001-492	20001-492	20001-495
JABRA GN2000 USB MONO	20001-435	20001-432	20001-432	20001-435
JABRA GN2000 MS USB DUO	20001-491	20001-491	20001-491	20001-491
JABRA GN2000 MS USB MONO	20001-431	20001-431	20001-431	20001-431
JABRA GN2000 USB CIPC NC MONO	20001-436	20001-436	20001-436	20001-436
JABRA GN2000 USB CIPC NC DUO	20001-496	20001-496	20001-496	20001-496
JABRA BIZ™ 2400 USB DUO⁴	2499-829-105	2499-829-104	2499-829-104	2499-829-105
JABRA BIZ™ 2400 MS USB DUO⁴	2499-823-105	2499-823-104	2499-823-104	2499-823-105
VOICE 150 MONO	1593-829-209	1593-829-209	1593-829-209	1593-829-209
VOICE 150 DUO	1599-829-209	1599-829-209	1599-829-209	1599-829-209
VOICE 150 MONO MS	1593-823-109	1593-823-109	1593-823-109	1593-823-109
VOICE 150 DUO MS	1599-829-109	1599-829-109	1599-829-109	1599-829-109
VOICE 250	2507-829-209	2507-829-209	2507-829-209	2507-829-209
VOICE 250 MS	2507-823-109	2507-823-109	2507-823-109	2507-823-109
VOICE 550 DUO	5599-829-209	5599-829-209	5599-829-209	5599-829-209
VOICE 550 DUO MS	5599-823-109	5599-823-109	5599-823-109	5599-823-109
VOICE 550 MONO	5593-829-209	5593-829-209	5593-829-209	5593-829-209
VOICE 550 MONO MS	5593-823-109	5593-823-109	5593-823-109	5593-823-109
JABRA BIZ™ 1900 USB MONO	1983-829-107	1983-829-104	1983-829-104	1983-829-107
JABRA BIZ™ 1900 USB DUO	1989-829-107	1989-829-104	1989-829-104	1989-829-107
JABRA SPEAK™ 410	7410-209	7410-209	7410-209	7410-209
JABRA SPEAK™ 410 MS	7410-109	7410-109	7410-109	7410-109
JABRA DIAL™ 520 MS	7521-09	7521-09	7521-09	7521-09
JABRA LINK™ 280	280-09	280-09	280-09	280-09
JABRA LINK™ 220	220-09	220-09	220-09	220-09

CONTACT INFORMATION

EMEA CUSTOMER CONTACT INFORMATION

COUNTRY	TELEPHONE	EMAIL
UNITED KINGDOM	+44 (0) 1784 220 172	info_uk@jabra.com
FRANCE	+33 (0) 130 589 075	techsupport@gnnetcom.fr
DEUTSCHLAND	+49 (0) 8031 2651 72	techsupport@gn.com
ESPAÑA	+34 916 398 064	-
ITALIA	+39 02 5832 8253	-
DENMARK	+45 45 75 99 99	support.dk@gn.com
SVERIGE	+46 (0) 8 693 09 00	info@jabra.se
NORGE	+47 32 22 74 70	support.no@gn.com
SUOMI	+358 204 85 6040	support.fi@gn.com
RUSSIA	-	gkarlson@gn.com
POLAND	+48 12 254 40 15	support.pl@jabra.com
CZECH REPUBLIC	+420 800 522 722	support.cz@gn.com
NEDERLAND	+49 (0) 8031 2651 72	techsupport@gn.com
BELGIQUE/BELGIUM	+49 (0) 8031 2651 72	techsupport@gn.com
LUXEMBOURG	+49 (0) 8031 2651 72	techsupport@gn.com
ÖSTERREICH	+49 (0) 8031 2651 72	techsupport@gn.com
MIDDLE EAST/AFRICA	-	support.mea@gn.com

USA AND CANADA CUSTOMER CONTACT INFORMATION

COUNTRY	TELEPHONE	EMAIL
USA	1-800-826-4656	techsupport@gnnetcom.com
CANADA	1-800-489-4199	techsupport@gnnetcom.com

ASIA PACIFIC CUSTOMER CONTACT INFORMATION

COUNTRY	TELEPHONE	EMAIL
AUSTRALIA	1-800-636-086 (local distributor)	support.apac@jabra.com
CHINA	+86-21-5836 5067	support.apac@jabra.com
HONG KONG	800-968-265 (Toll free)	support.apac@jabra.com
INDONESIA	001-803-852-7664	support.apac@jabra.com
JAPAN	+81-3-5297-7976	support.apac@jabra.com
MALAYSIA	1800-812-160 (Toll free)	support.apac@jabra.com
NEW ZEALAND	0800-447-982 (Toll free)	support.apac@jabra.com
SINGAPORE	800-860-0019 (Toll free)	support.apac@jabra.com
TAIWAN	0080-186-3013 (Toll free)	support.apac@jabra.com
INDIA	000-800-852-1185 (Toll free)	support.apac@jabra.com
PHILIPPINE	+63-2-2424806	support.apac@jabra.com

All corporate, product and brand names used in this document are trademarks of their respective owners



GN Netcom is a world leader in innovative headset solutions. GN Netcom develops, manufactures and markets its products under the Jabra brand name

GN Netcom cannot guarantee accuracy, this Guide is a guideline only, all information is believed to be correct and is based on GN Netcom's extensive testing or on the soft client vendors own statements